



HCAOG TAC

Pavement Management Program 2017 Update

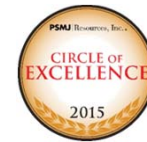
September 7, 2017



www.ncenet.com

Presentation Outline

- Current Pavement Condition Index (PCI)
- M&R strategies & Costs
- Funding Scenarios
- Essential Components
- Next steps
- Questions?

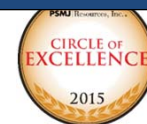


www.ncenet.com

Paved Road Network

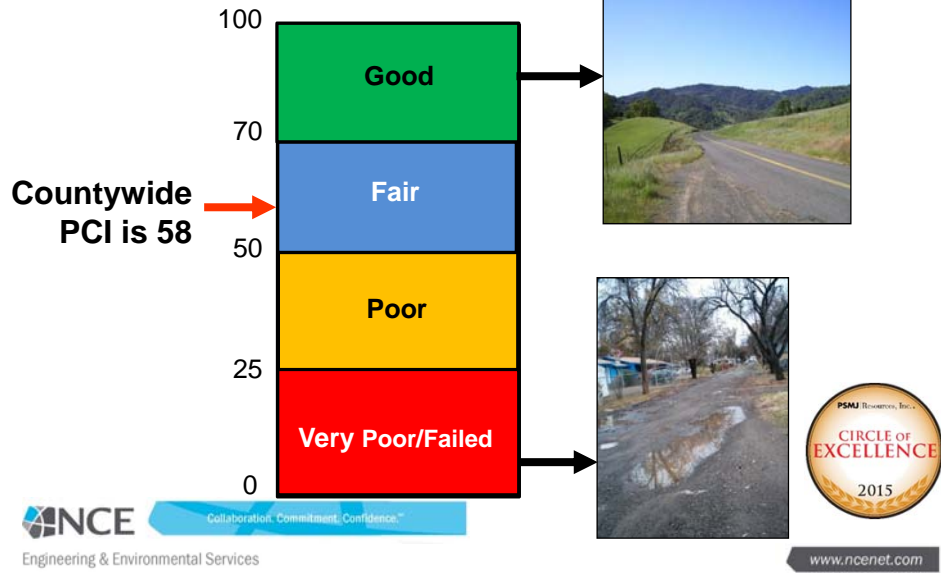
Agency	Centerline Miles	Agency	Centerline Miles
Arcata	63.2	Fortuna	
Blue Lake	7.1	Humboldt	388.4
Fortuna		Rio Dell	13.9
Fortuna	9.3	Trinidad	3.3
Total	1,146.3 Miles		

Asset value is \$1.3 Billion!

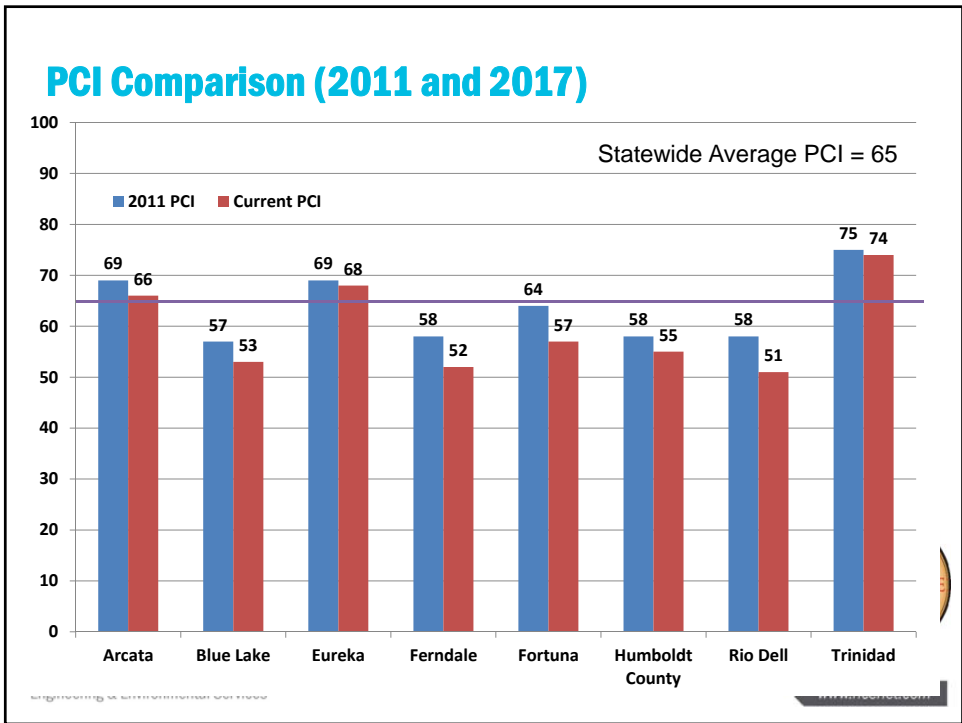


www.ncenet.com

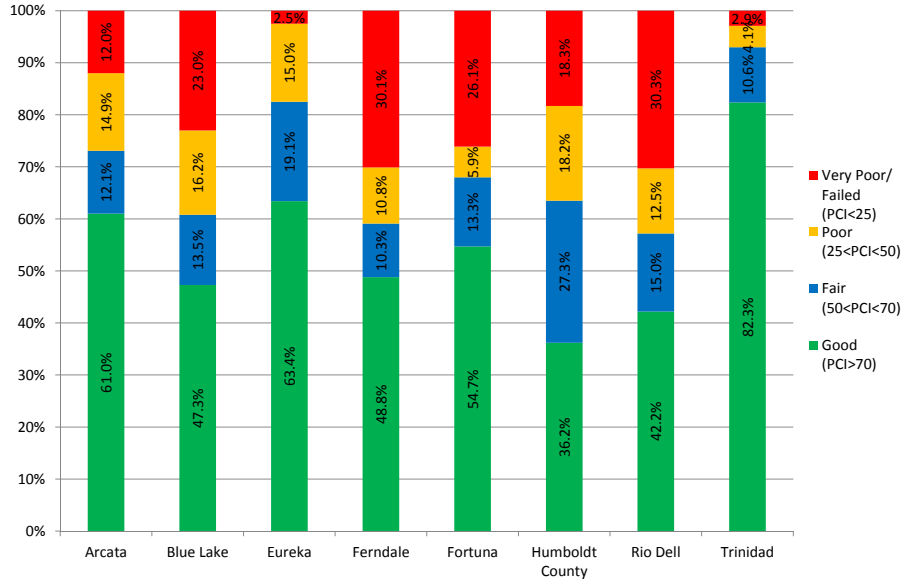
Average PCI Countywide



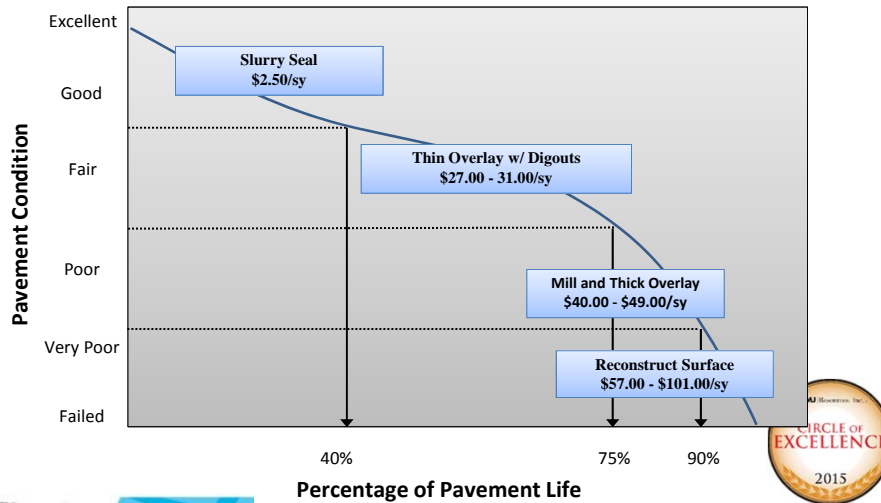




Pavement Condition by Category



Typical Maint. & Rehabilitation Strategies



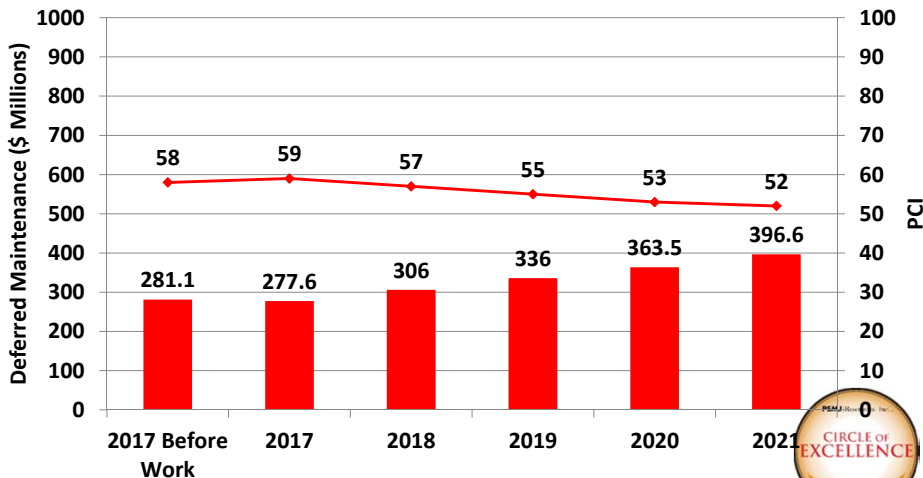
Funding Scenarios

- **Assumptions**
 - 5 to 10 year analysis period
 - Annual inflation 3%
- **Scenario 1 - Existing Funding**
 - RMRA (SB1) included - approx. \$2.2 m/year
- **Scenario 2 - Maintain Existing PCI**
- **Scenario 3 - Increase PCI**



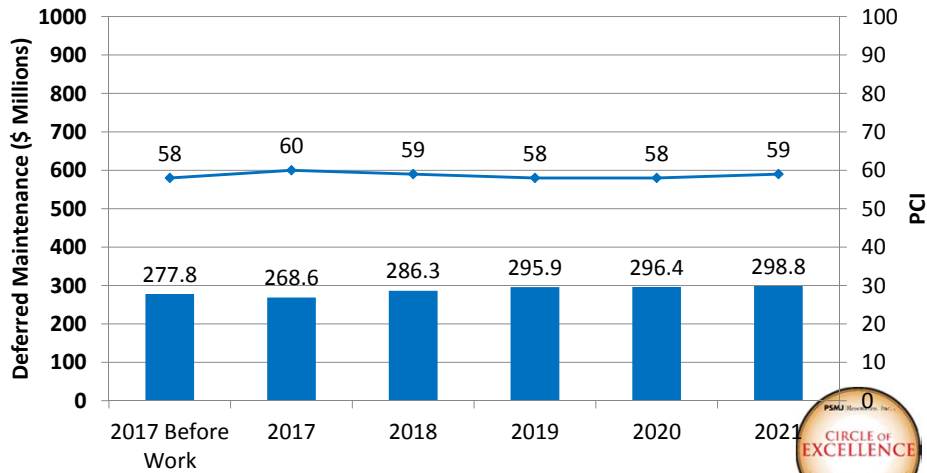
www.ncenet.com

Scenario 1 - Existing Funding (\$6.1 m/year)

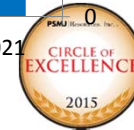


www.ncenet.com

Scenario 2 - Maintain Current PCI (\$22.3m/yr)

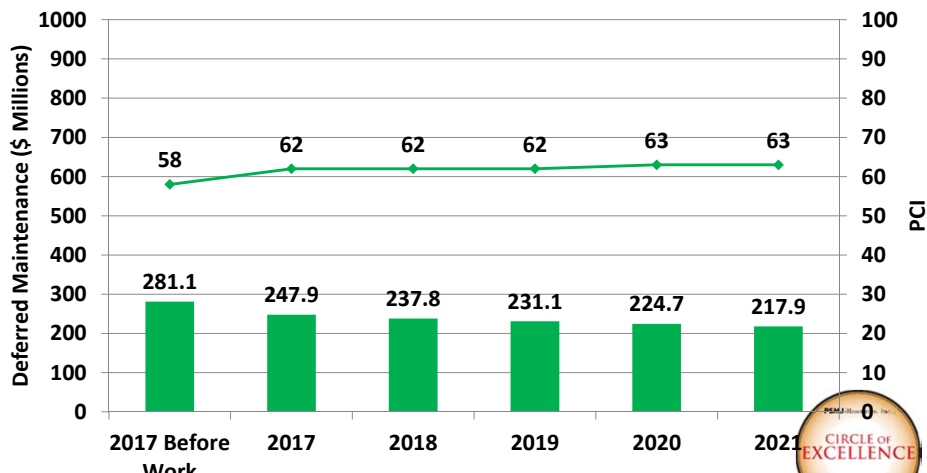


NCE Collaboration. Commitment. Confidence.[™]
Engineering & Environmental Services



www.ncenet.com

Scenario 3 - Increase PCI by 5 Points (\$40.8 m/yr)

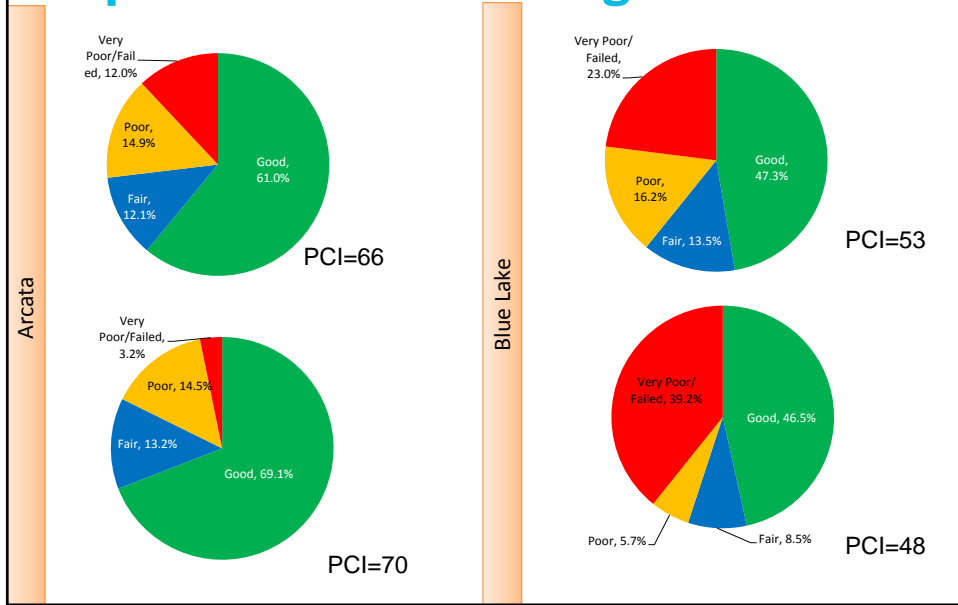


NCE Collaboration. Commitment. Confidence.[™]
Engineering & Environmental Services

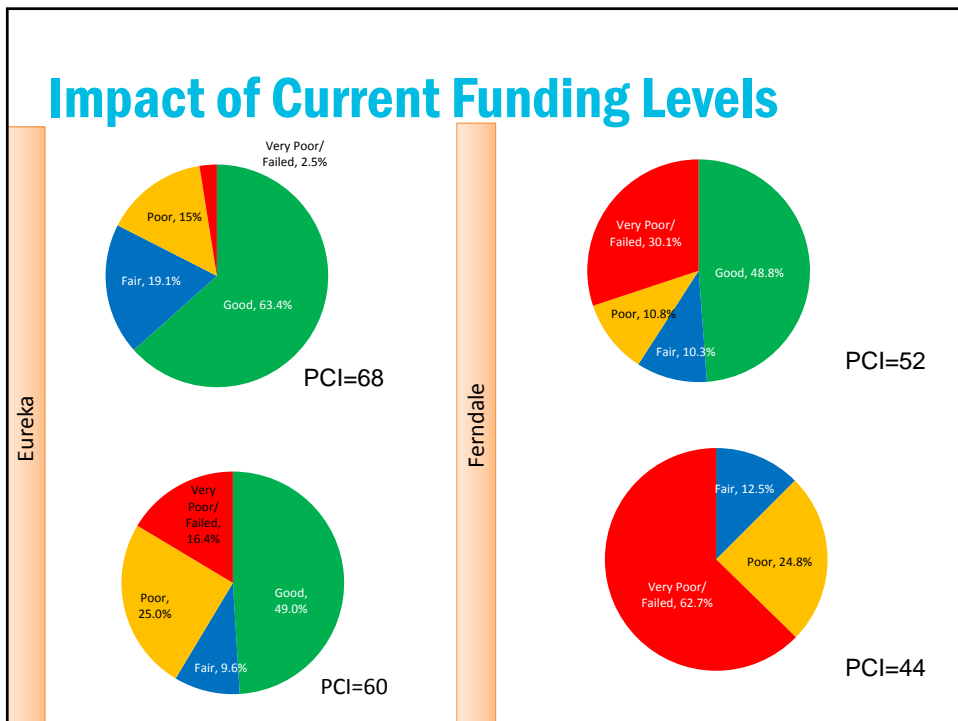


www.ncenet.com

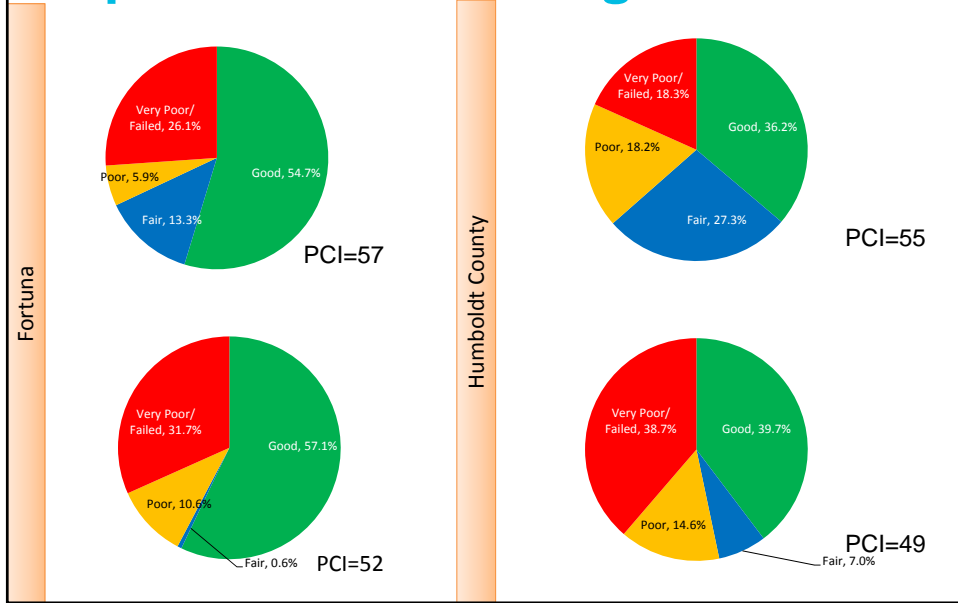
Impact of Current Funding Levels



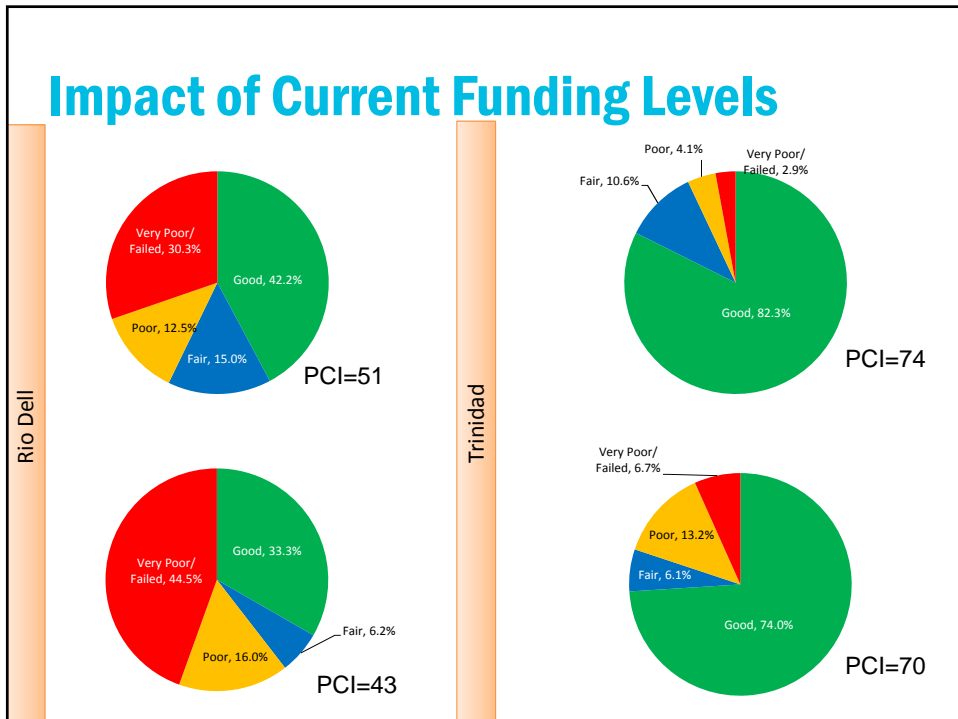
Impact of Current Funding Levels



Impact of Current Funding Levels



Impact of Current Funding Levels



Conclusions

- Humboldt County has substantial investment in road network (\$1.3 billion)
- Network is in “Fair” Condition; PCI = 58
 - Average PCI ranges from 51 (Rio Dell) to 74 (Trinidad)
- Existing budget (\$6.1 m/year) is not sufficient
- Need \$22.3 m/year to maintain status quo



www.ncenet.com

Essential Components



www.ncenet.com

Essential Component Needs (10-Years)

Agency	Essential Components		
	Needs (\$M)	Existing Funding (\$M)	Shortfall (\$M)
Arcata	17.5	5.6	(11.9)
Blue Lake	1.5	0.5	(1.0)
Eureka	22	4.5	(17.5)
Ferndale	1.8	0.7	(1.1)
Fortuna	1.7	4.0	2.3
Humboldt County	124.7	17.7	(107.0)
Rio Dell	2.2	1.1	(1.1)
Trinidad	1.1	0.2	(0.9)
Total	172.5	34.3	(138.2)

Source: 2016 Statewide Needs Assessment

Next Steps

- **Receive comments on draft reports and finalize**
- **StreetSaver Training – to be scheduled**
- **Board presentation – to be scheduled**



Margot Yapp, PE
Vice President
myapp@ncenet.com
510.215.3620



25 Engineering & Environmental Services

www.ncenet.com