
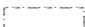



**Figure 2.1  
Humboldt County Vicinity**

This map is intended for planning purposes only, it is not a transportation route guide.  
Sources: Esri, HCAOG, Planwest Partners, Humboldt County GIS.  
Map Date: 12/16/2021



-  Major Roads
-  Counties
-  Tribal Areas

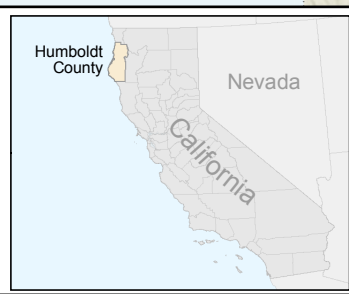




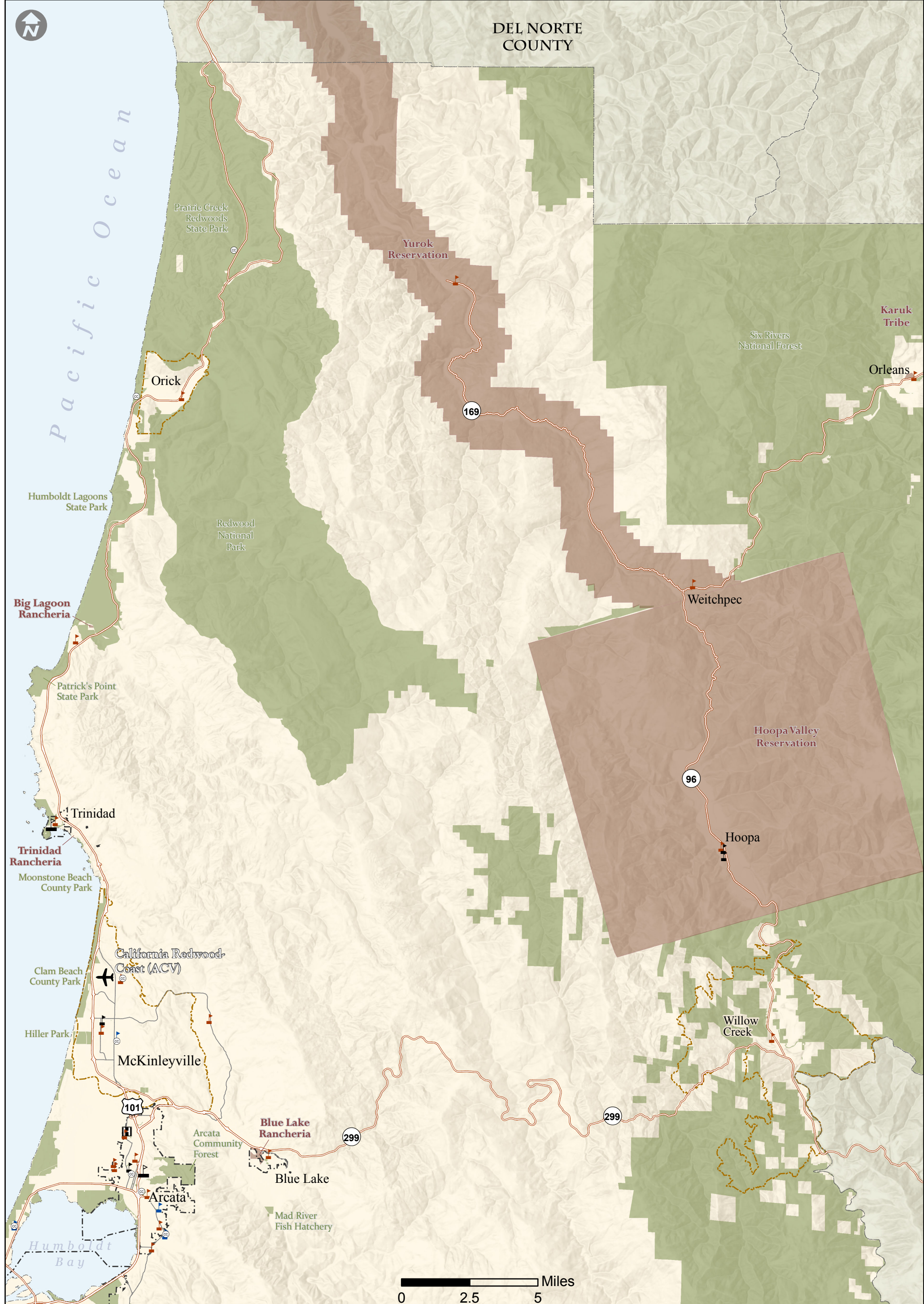
0 5 10 Miles

**Figure 2.2  
Humboldt County  
General Land Use**

This map is intended for planning purposes only, it is not a transportation route guide.  
Sources: Esri, HCAOG, Planwest Partners, Humboldt County GIS.  
Map Date: 12/16/2021



- |                         |                         |              |
|-------------------------|-------------------------|--------------|
| Counties                | Open Space/Public Lands | Mixed Use    |
| <b>Land Use</b>         | Commercial              | Residential  |
| City/Urban              | Industrial              | Tribal Lands |
| Agricultural/Timberland |                         |              |



**Figure 2.3a**  
**Population Centers & Major Destinations: North**

This map is intended for planning purposes only, it is not a transportation route guide.  
 Sources: Esri, HCAOG, Planwest Partners, Humboldt County GIS.  
 Map Date: 12/16/2021



- Freeways/Highways
- Major Roads
- Counties
- Incorporated City
- Census Designated Place
- Public Land
- Tribal Areas
- ✈ Commercial Airport
- ⊙ Community Center
- H Hospital





**Figure 2.3b**  
**Population Centers & Major Destinations: South**

This map is intended for planning purposes only, it is not a transportation route guide.  
 Sources: Esri, HCAOG, Planwest Partners, Humboldt County GIS.  
 Map Date: 12/16/2021



Freeways/Highways	College/University	Commercial Airport
Major Roads	Elementary School	Community Center
Counties	High School	Hospital
Incorporated City	Middle School	
Census Designated Place		
Public Land		





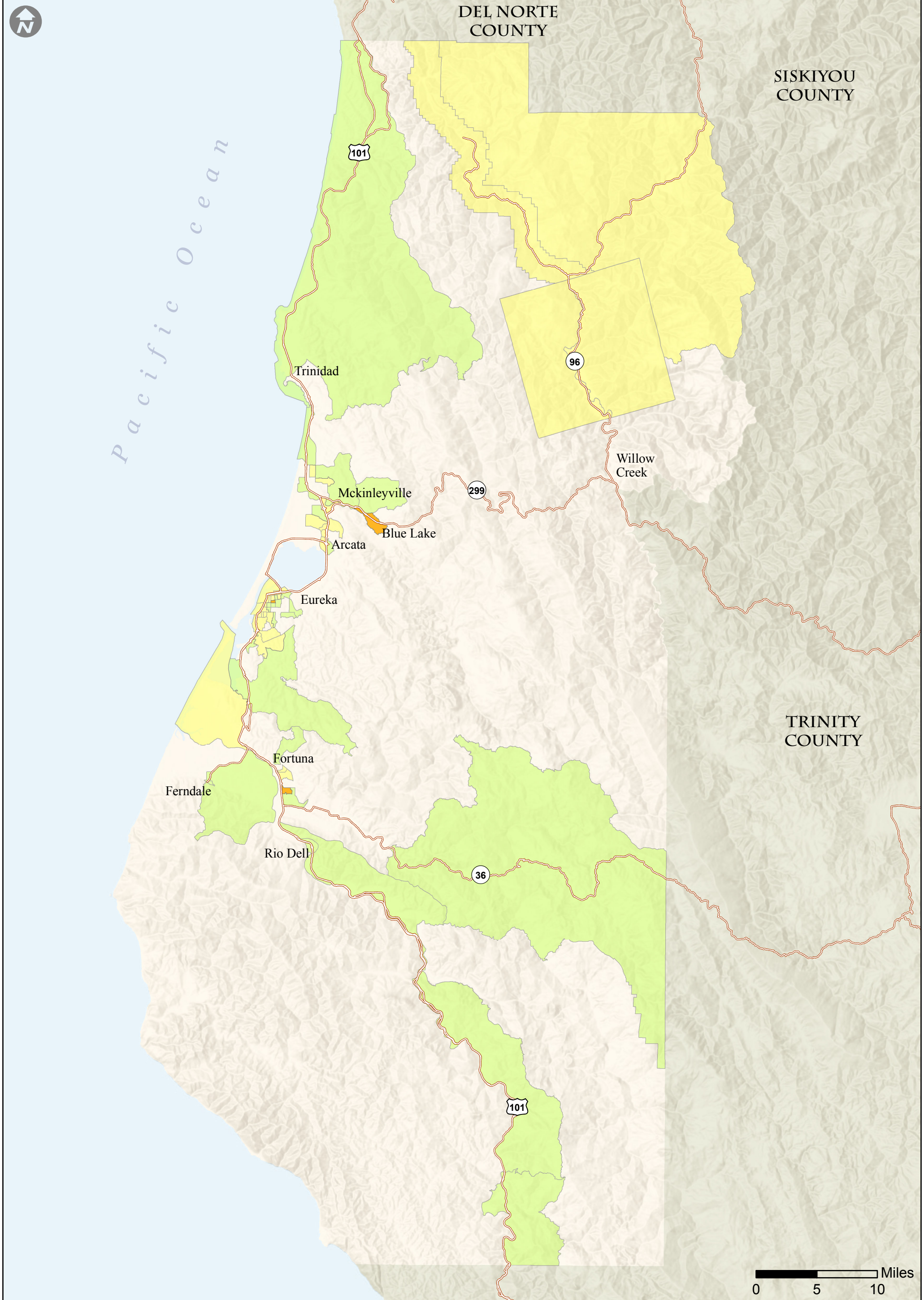
**Figure 2.3c**  
**Population Centers & Major Destinations: Humboldt Bay**

This map is intended for planning purposes only, it is not a transportation route guide.  
 Sources: Esri, HCAOG, Planwest Partners, Humboldt County GIS.  
 Map Date: 12/16/2021



- |                         |                    |                    |
|-------------------------|--------------------|--------------------|
| Freeways/Highways       | College/University | Commercial Airport |
| Major Roads             | Elementary School  | Community Center   |
| Incorporated City       | High School        | Hospital           |
| Census Designated Place | Middle School      |                    |
| Tribal Areas            |                    |                    |
| Public Land             |                    |                    |





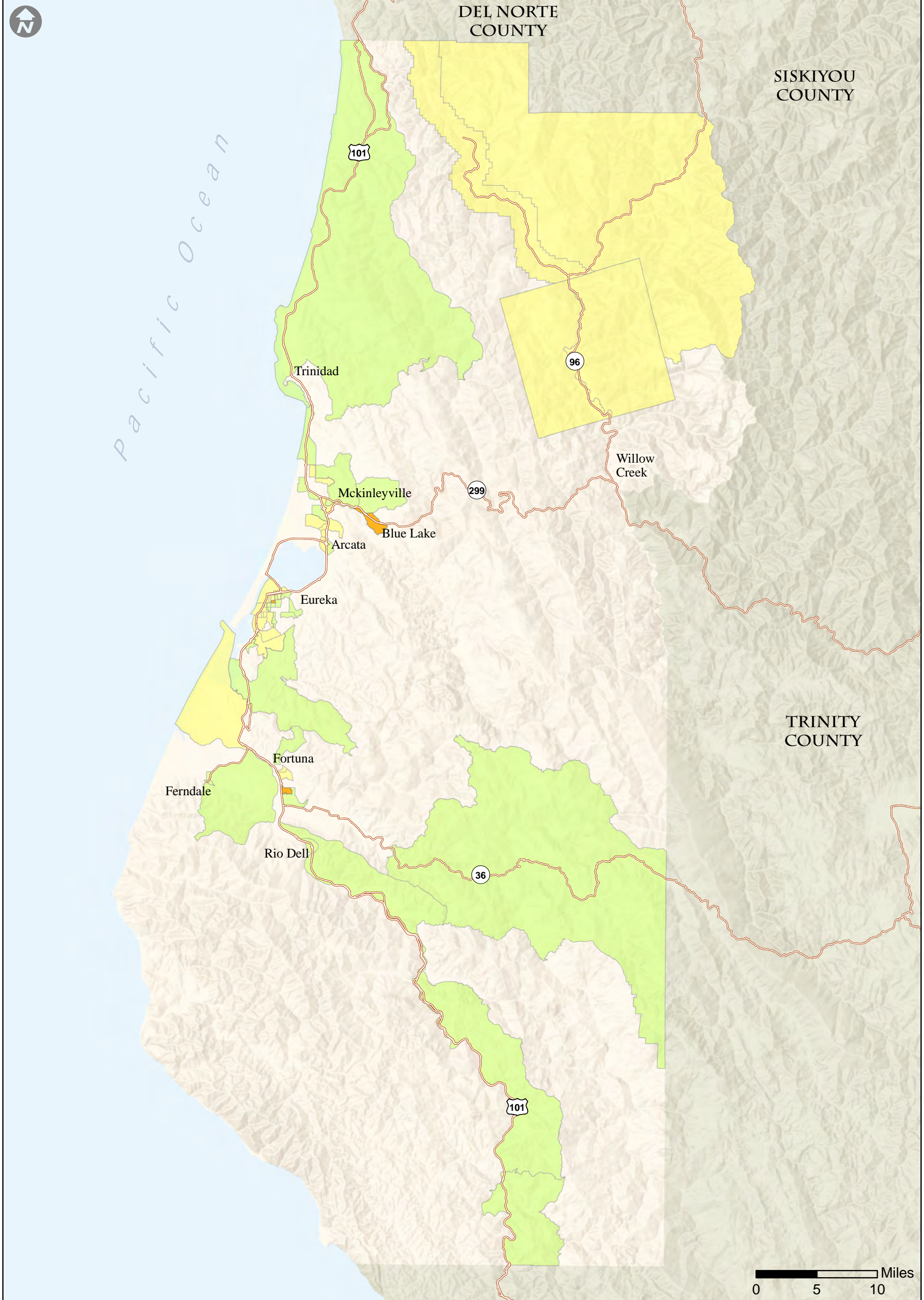
**Figure 2.4**  
**Disadvantaged Communities**



- Disadvantaged Communities - conditions A only
- Disadvantaged Communities - conditions B only
- Disadvantaged Communities - conditions A & B
- Freeways/Highways

This map is intended for planning purposes only, it is not a transportation route guide.  
Sources: Esri, HCAOG, Planwest Partners, Humboldt County GIS.  
Map Date: 1/6/2022





**Figure 2.4**  
**Disadvantaged Communities**



- Disadvantaged Communities - conditions A only
- Disadvantaged Communities - conditions B only
- Disadvantaged Communities - conditions A & B
- Freeways/Highways

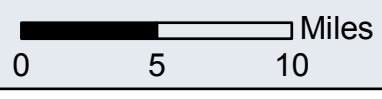
This map is intended for planning purposes only, it is not a transportation route guide.  
Sources: Esri, HCAOG, Planwest Partners, Humboldt County GIS.  
Map Date: 1/6/2022



In Figure 2.4, "disadvantaged communities" are defined by the following criteria.  
(Criteria are based on definitions and data from the U.S. Census (2016 5-year ACS data).)

- Conditions A – Census block groups with indicators:
  - Racial/ethnic minority – where 20% or more of population is either Hispanic or not White, **and**
  - Households with low incomes (80% or less than the statewide median household income)
  
- Conditions B – Census block groups with indicators:
  - Households with low incomes (80% or less than the statewide median household income), **and**
  - at least 3 of 9 following variables
    1. Poverty – where 45% or more of population lives at 200% or less of the federal poverty.
    2. Unemployed – Census block groups where 20% or more of the labor force is unemployed.
    3. Elderly – where 10% or more of population is aged 75 or older.
    4. Young – 20% or more of population is under age 18.
    5. Linguistic isolation – where 5% or more of households have no one over 14 who speaks English only or speaks English very well.
    6. Limited mobility-vehicle access – where 40% or more of housing units with 0-1 vehicles
    7. Limited mobility-active transportation – Smaller block groups without bike facilities access within ½ mile radius.
    8. Limited mobility-transit – Smaller block groups without transit access within ½ mile radius.
    9. Housing cost burden – where 20% or more of occupied housing units pay more than 50% of household income in housing costs.








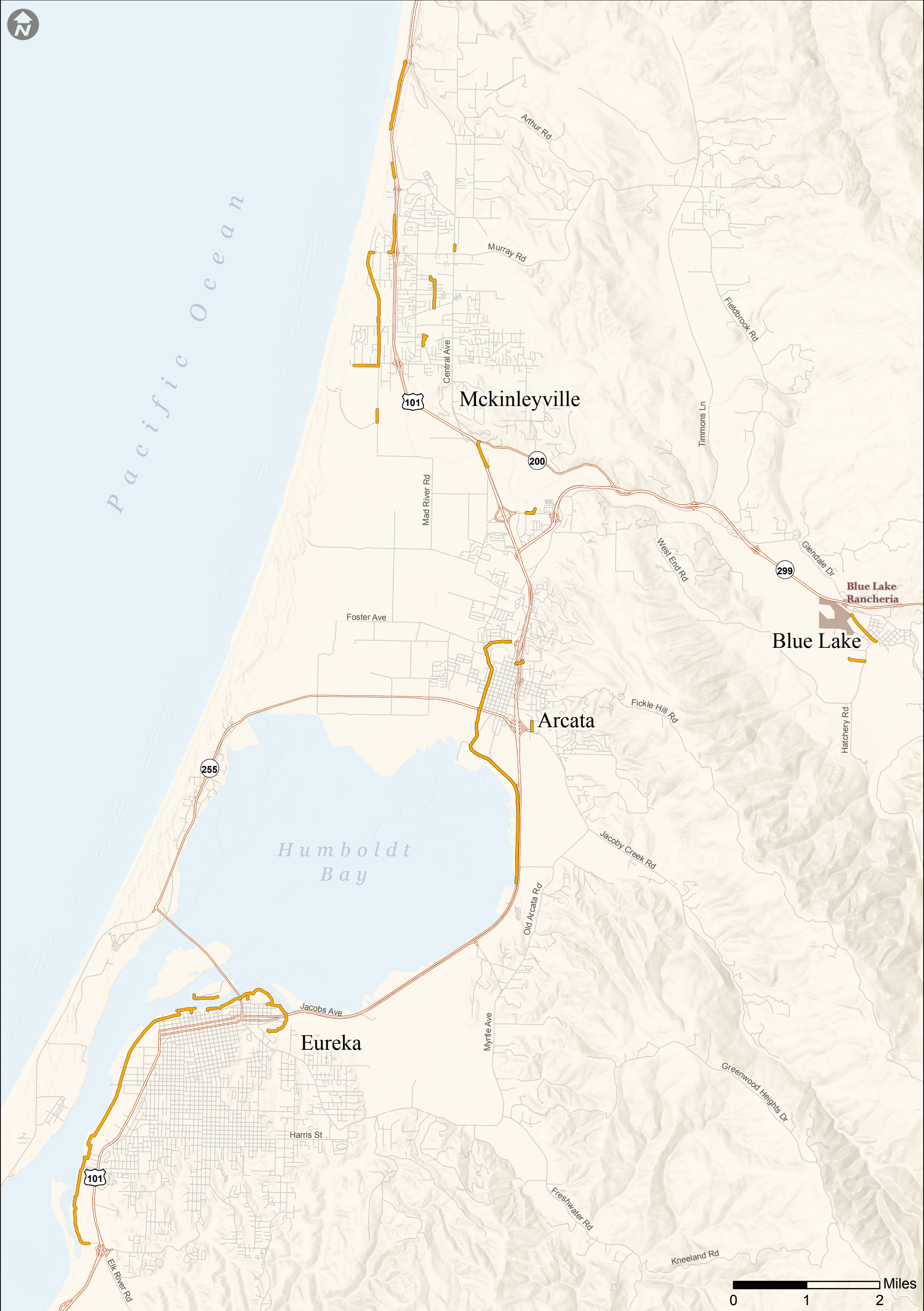
**Figure 4.1  
Tribal Areas**

This map is intended for planning purposes only, it is not a transportation route guide.  
Sources: Esri, HCAOG, Planwest Partners, Humboldt County GIS, U.S. Census.  
Map Date: 12/22/2021



-  Major Roads
-  Counties
-  Tribal Areas







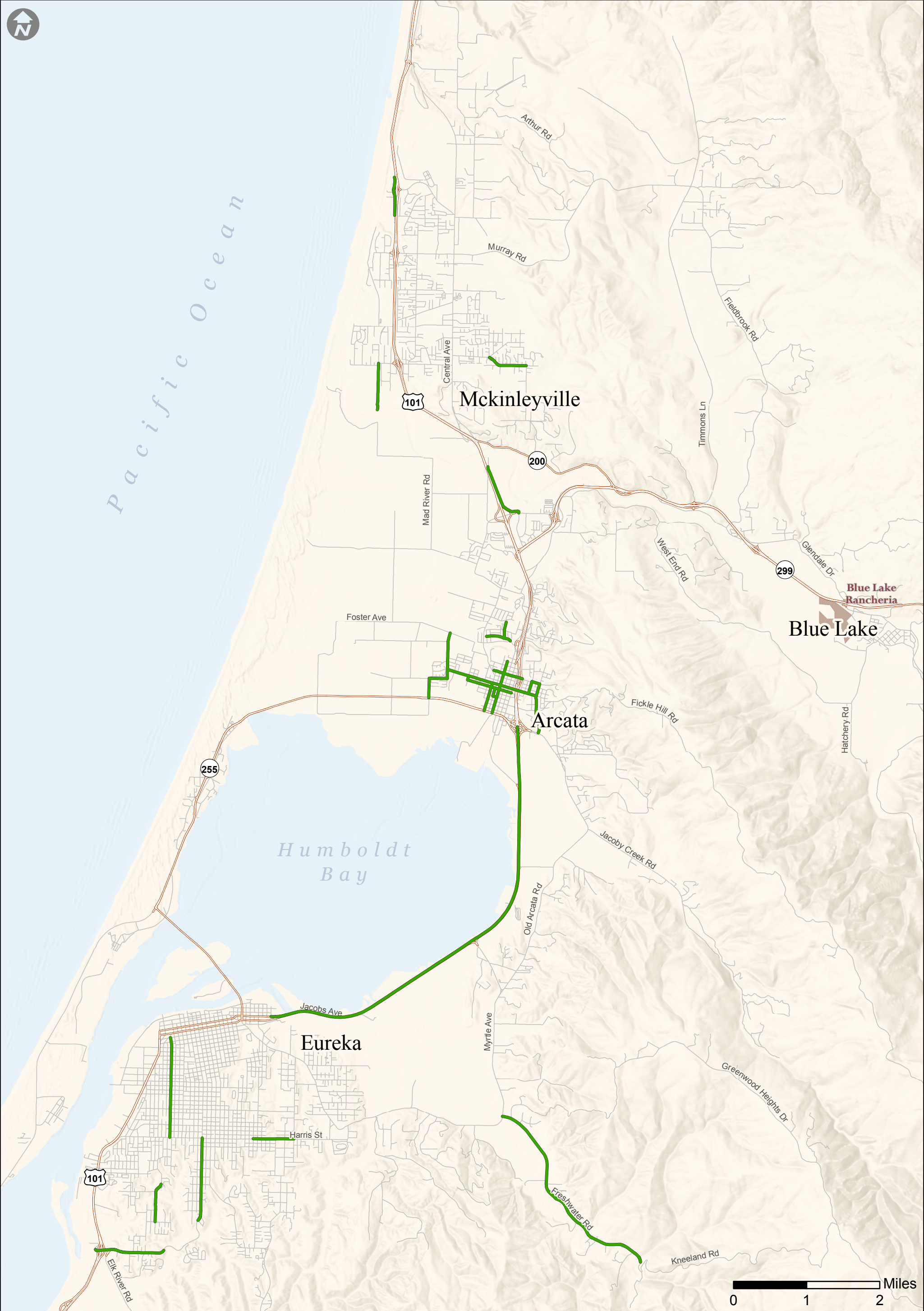


**Figure 7.1**  
**Class I Regional Commuter**  
**Multi-use Trails**

This map is intended for planning purposes only, it is not a transportation route guide.  
 Sources: Esri, HCAOG, Planwest Partners, Humboldt County GIS.  
 Map Date: 12/16/2021



-  Existing Class I Routes
-  Roads
-  Freeways/Highways
-  Tribal Areas

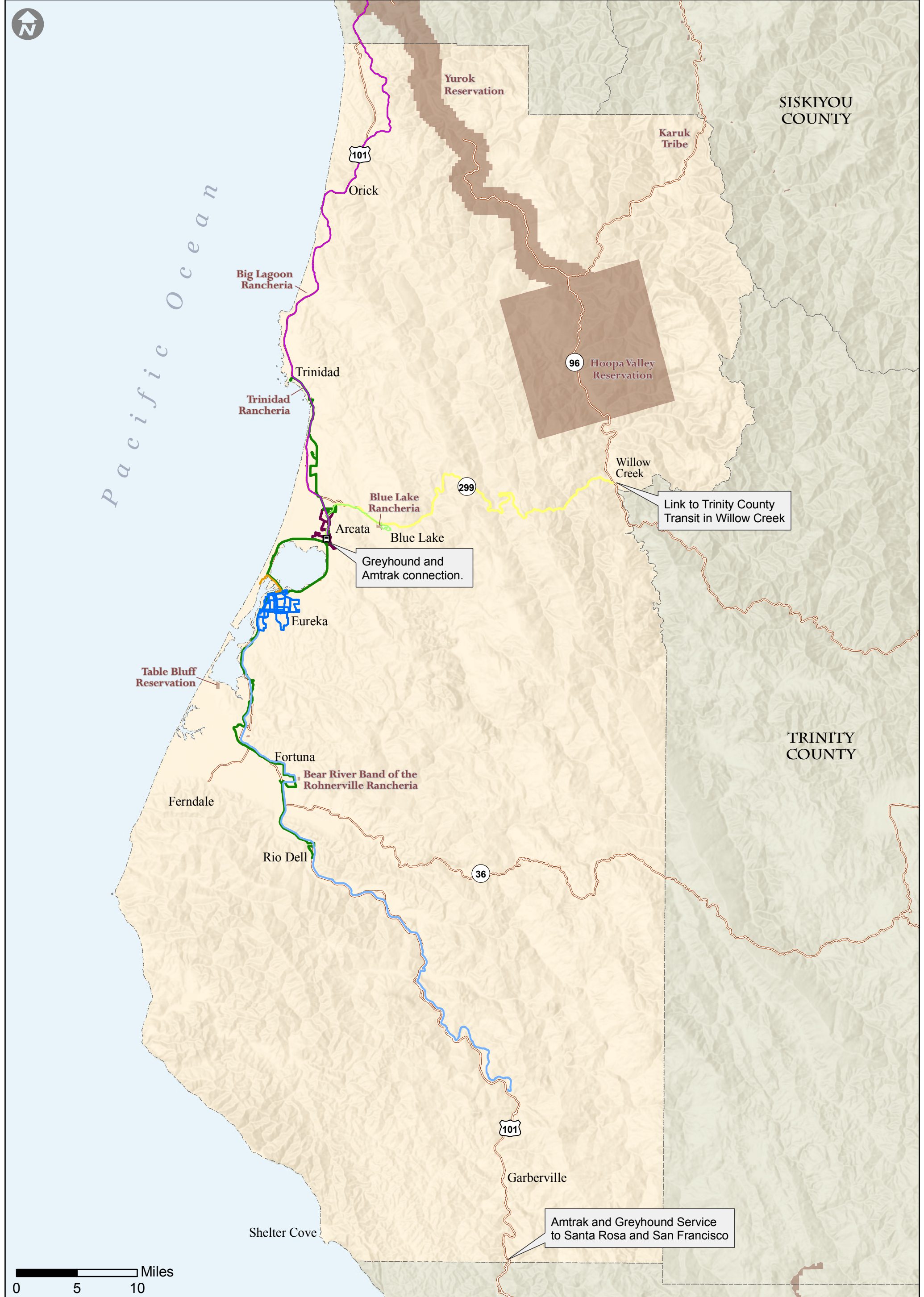


**Figure 7.2**  
**Class III Regional**  
**Bicycle Routes**

This map is intended for planning purposes only, it is not a transportation route guide.  
 Sources: Esri, HCAOG, Planwest Partners, Humboldt County GIS.  
 Map Date: 12/16/2021



- Existing Class III
- Roads
- Freeways/Highways
- Tribal Areas



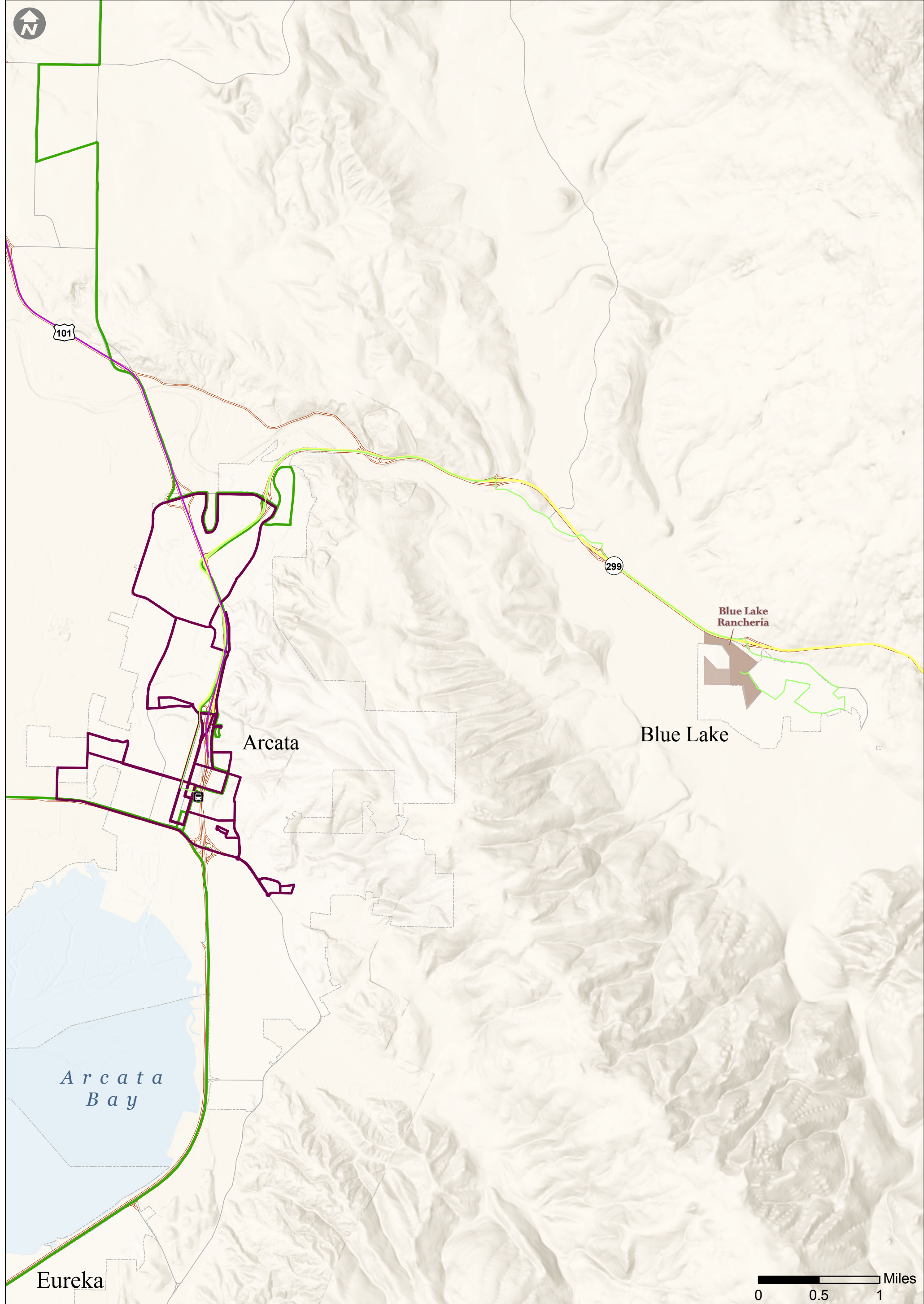
**Figure 9.1a**  
**Transit Routes:**  
**Countywide**

This map is intended for planning purposes only, it is not a transportation route guide.  
 Sources: Esri, HCAOG, Planwest Partners, Humboldt County GIS.  
 Map Date: 12/16/2021



- |                                 |                             |
|---------------------------------|-----------------------------|
| Transit Center                  | Samoa Transit System        |
| Arcata-Mad River Transit        | Southern Humboldt Intercity |
| Blue Lake Rancheria Transit     | Willow Creek Intercity      |
| Eureka Transit Service          | Counties                    |
| Redwood Coast Transit (Rte. 20) |                             |
| Redwood Transit System          |                             |


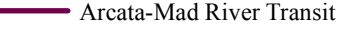

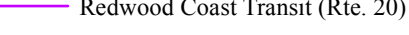
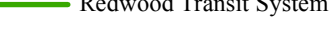


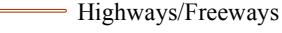
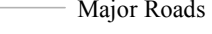




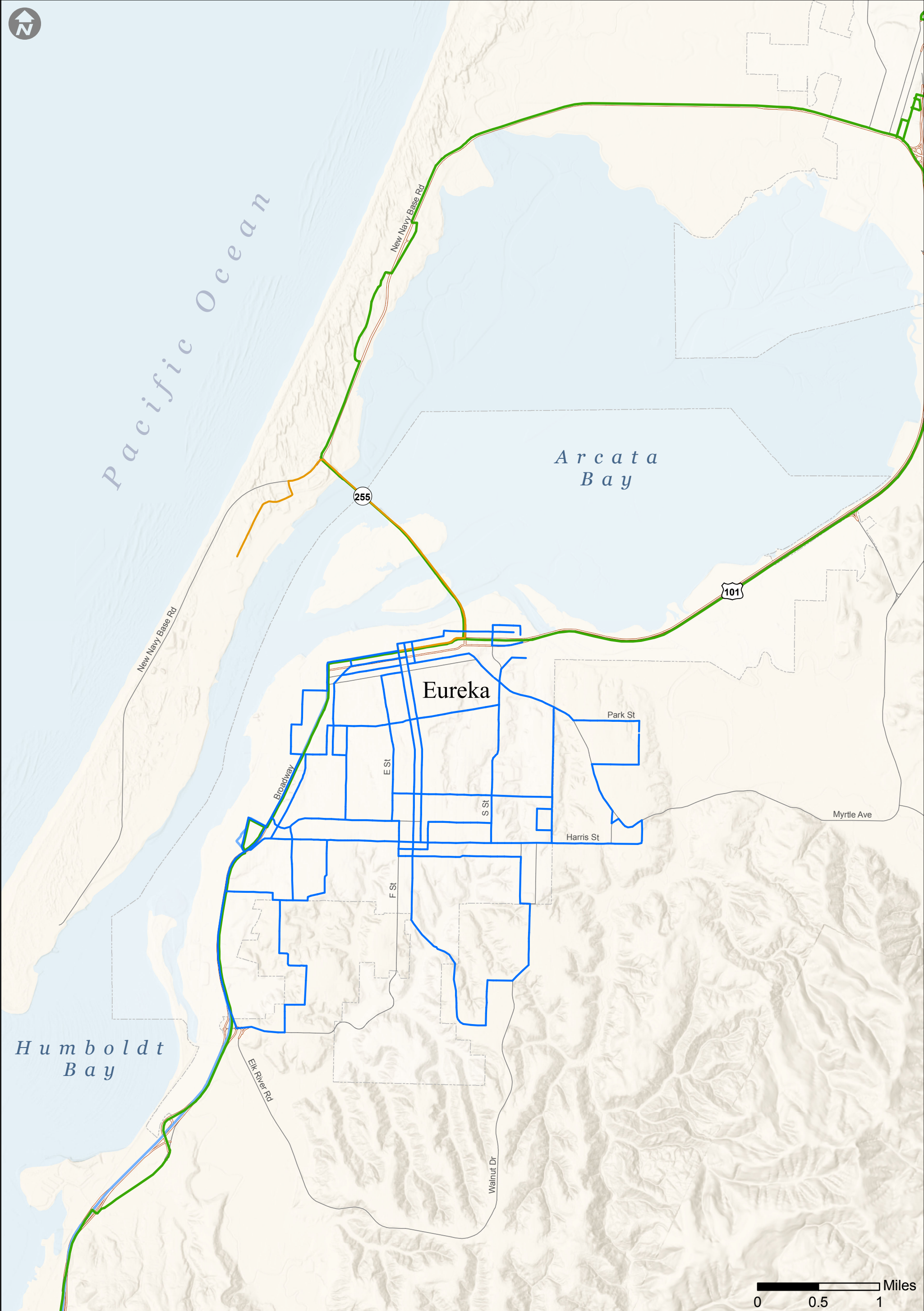
**Figure 9.1b**  
**Transit Routes: Arcata**

This map is intended for planning purposes only, it is not a transportation route guide.  
 Sources: Esri, HCAOG, Planwest Partners, Humboldt County GIS.  
 Map Date: 12/16/2021



-  Transit Center
-  Arcata-Mad River Transit
-  Blue Lake Rancheria Transit
-  Redwood Coast Transit (Rte. 20)
-  Redwood Transit System
-  Willow Creek Intercity
-  Incorporated Cities
-  Highways/Freeways
-  Major Roads



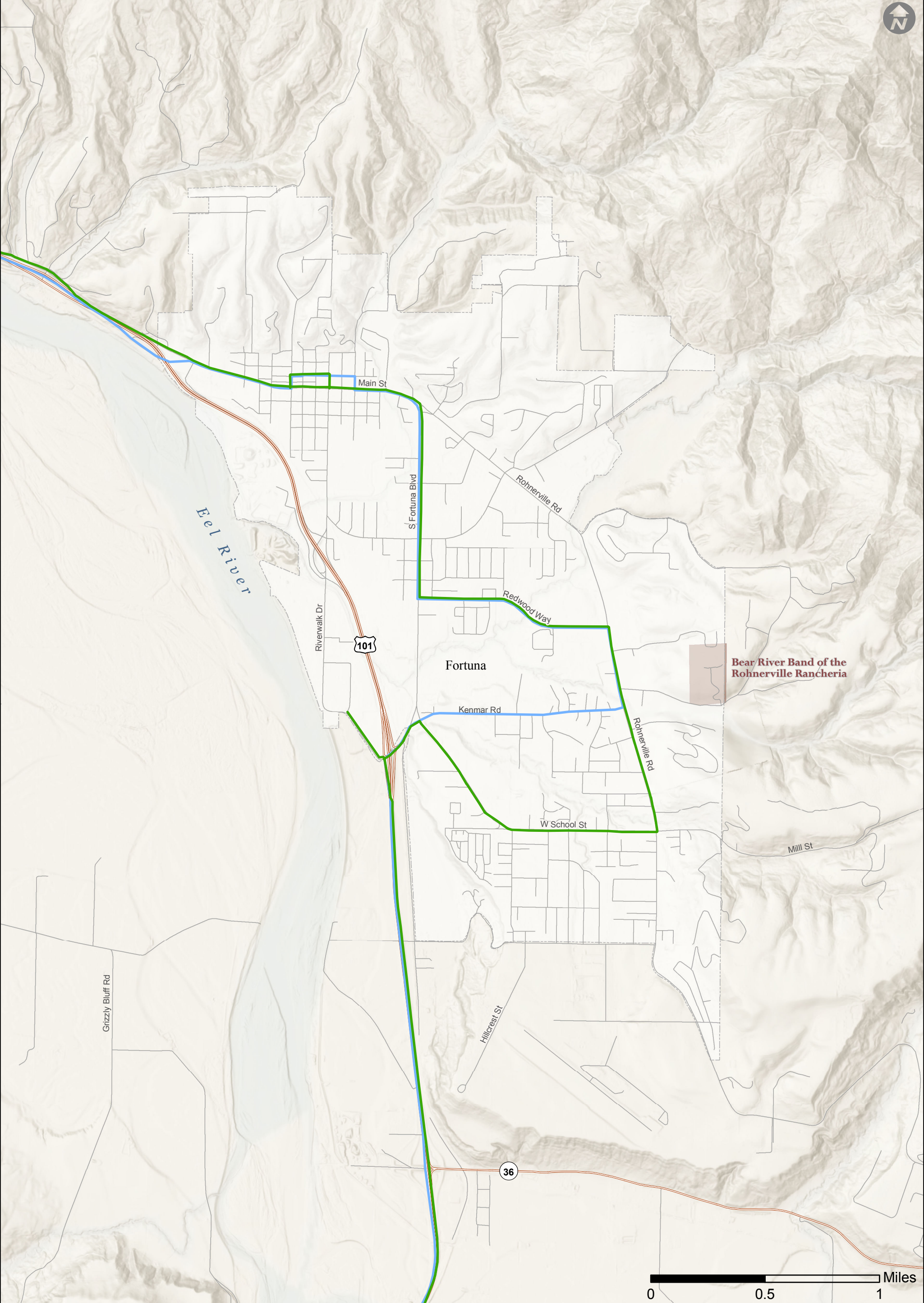


**Figure 9.1c**  
**Transit Routes: Eureka**



- Eureka Transit Service
- Redwood Transit System
- Samoa Transit System
- Southern Humboldt Intercity
- Freeways/Highways
- Major Roads
- Incorporated Cities

This map is intended for planning purposes only, it is not a transportation route guide.  
 Sources: Esri, HCAOG, Planwest Partners, Humboldt County GIS.  
 Map Date: 12/16/2021



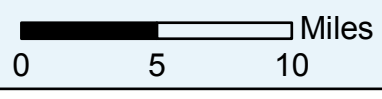
**Figure 9.1d**  
**Transit Routes: Fortuna**



- Redwood Transit System
- Southern Humboldt Intercity
- Freeways/Highways
- Major Roads, Local Roads
- Incorporated Cities

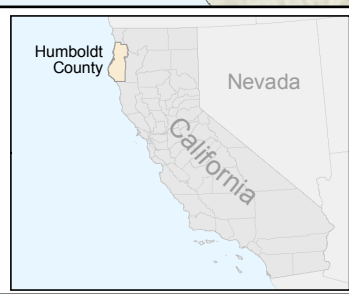
This map is intended for planning purposes only, it is not a transportation route guide.  
Sources: Esri, HCAOG, Planwest Partners, Humboldt County GIS.  
Map Date: 12/16/2021





**Figure 10.1  
Airports**

This map is intended for planning purposes only, it is not a transportation route guide.  
Sources: Esri, HCAOG, Planwest Partners, Humboldt County GIS.  
Map Date: 12/22/2021



- Counties
- ⇩ Shipping Terminals
- ✈ Commercial Airport (County)
- ✈ General Aviation Airport
- ✈ General Aviation Airport (County)
- Out of Service Railroad ROW
- Freeways/Highways
- Major Roads







**Figure 11.1  
Harbor/Marine Facilities**



- Docks
  - Major Roads
  - Freeways/Highways
- Channel Depth**
- 47 ft
  - 41 ft - 44ft
  - 33ft

This map is intended for planning purposes only, it is not a transportation route guide.  
Sources: Esri, HCAOG, Planwest Partners, Humboldt County GIS.  
Map Date: 12/22/2021

