

DAN BURDEN

Dan is nationally and internationally recognized for his results-oriented approach to bringing people, agencies, and organizations together to form long-lasting partnerships resulting in healthy, prosperous, resilient, and sustainable places. Dan helps communities vision and implement streets that support walking, bicycling and social engagement. He is considered, by peers, as an accomplished thought-leader and implementation-focused practitioner in walkability, active transportation, traffic calming, safe routes to school, placemaking, and street design. Dan's craft inspires diverse teams in coming together to see the big picture, integrating transportation planning with land use and health programming to build whole and complete communities that work for everyone.



EXPERTISE

- Transportation planning
- Urban design
- Community engagement
- Design development
- Peer review



EXPERIENCE

- **Blue Zones, LLC**
 - Director of Innovation and Inspiration, 2014 - present
- **Walkable and Livable Communities Institute**
 - Co-Founder and Executive Director, 2009 - 2014
- **Glatting Jackson Kercher Anglin, Inc.**
 - Partner and Senior Urban Designer, 2005 - 2009
- **Walkable Communities, Inc.**
 - Co-Founder and Executive Director, 1996 - 2005
- **Florida Department of Transportation**
 - State Bicycle and Pedestrian Coordinator, 1980 - 1996
- **Bicycle Federation of America (National Center for Walking and Bicycling)**
 - Co-Founder and Executive Director, 1977 - 1979
- **Bikecentennial (Adventure Cycling)**
 - Co-Founder and Executive Director, 1973 - 1977
- **Hemistour Bicycle Expedition (Alaska to Argentina)**
 - Expedition Leader, 1972 - 1973
 - National Geographic Freelance Photographer

EDUCATION

- **University of Montana**
 - Bachelor of Science - Recreation Sciences, 1979
 - Graduate Studies - Interpersonal Communications, 1980
- **Institute for Participatory Management and Planning**
 - Systematic Development of Informed Consent, 2010



614.595.0976



dan.burden44gmail.com

AWARD-WINNING PROJECTS

Dan Burden has 45+ years of experience in transportation planning/engineering, urban design, and public engagement. He specializes in all elements of Active Transportation including walkability studies, street patterns and connectivity, repurposing streets through road diets, main street conversions, traffic calming, trail design, and safe routes to school. He is noted for his abilities to plan, design, and facilitate workshops, lead walking audits and to provide community-building charrettes. His goal is to bring many professions closer together, retooling and rebuilding communities using a “people and place first” approach to engineering, planning, health, development, placemaking, architecture, advocacy, historic preservation, and landscape architecture.

LA JOLLA BOULEVARD, BIRD ROCK, SAN DIEGO: TRAFFIC MANAGEMENT AND CORRIDOR PLAN

Dan facilitated an extensive civic engagement process to address ways to calm and move traffic, create an attractive streetscape, and increase retail success. This project involved redesign of a former 5-lane roadway converted to 2-lanes. Four signals and one four-way stop were replaced with five roundabouts. The project received several awards: the 2008 Transportation Project of the Year given by the American Public Works Association, the Smart Growth Catalyst Project of the Year from the Urban Land Institute, and an Award of Merit for Planning Excellence for a Grassroots Initiative from the American Planning Association.



TOWN OF HAMBURG, NEW YORK: MAIN STREET CONVERSION / US ROUTE 62

Dan led the Town of Hamburg, New York, and New York Department of Transportation with visioning, concept development, pedestrian analysis, and a charrette-style public process for reconstruction of all three downtown commercial streets and seven re-engineered intersections. He provided a series of interactive workshops to bring residents, city, and state officials together to form a working, implementable vision. The resulting design included a main street plan, on- and off-street parking details, streetscaping, a detailed concept plan, pre-construction review services, and walkability/bikeability assessment, traffic calming, and placemaking elements. NYDOT won the Innovative Management Award by AASHTO, AAA, and the U.S. Chamber of Commerce for their work on this project (U.S. Route 62 Hamburg Project).



HILLSBOROUGH STREET, RALEIGH, NORTH CAROLINA: DESIGN CHARRETTE

Hillsborough Street is an important state trunk line, connecting the Capitol Building in downtown Raleigh to the state fair grounds and distant neighborhoods. The street bisects some of the city’s oldest and greenest neighborhoods. Hillsborough Street was listed as the most dangerous state roadway for pedestrians. The five-day charrette helped more than 500 people reach consensus on a significant roadway alteration, dropping five lanes to two in some sections and three lanes in others, plus dedicated turn lanes. A dozen roundabouts and many pedestrian, bicycle and transit amenities were proposed, and many were built. The team worked on an overall village plan, a traffic management plan, place making and streetscaping, rebuild of key intersections, traffic calming, walkability, open space, transit operations, main street design and bicycling elements.



ADDITIONAL EXPERTISE

TRAFFIC CALMING MASTER PLANS

- Waikiki Livability & Traffic Management Study (all of Waikiki's surface streets and integration of Bus Rapid Transit)
- Honolulu Traffic Calming Master Plan (43 Neighborhoods)
- Savannah, Georgia - Traffic Calming Master Plan for various neighborhoods, and foundation for a city-wide traffic calming master plan
- Hartford, Connecticut - City-wide Traffic Calming Master Plan
- Stamford, Connecticut - City-wide Traffic Calming Master Plan
- Mt. Pleasant, Michigan - Campus Master Plan and Neighborhood Traffic Calming

TRANSPORTATION STUDIES, CONNECTIVITY & MOBILITY PLANS

- Juneau, AK - Transportation Study
- La Mesa, CA - Walkability and Bicycling Facilities Study
- Plattsburgh, NY - Traffic calming, Main Street, trails development
- Alma, MI - Downtown traffic management plan (one way to two-way conversion)
- Charlotte, NC - Downtown walkability study, connectivity study, seven transit villages for Charlotte (conceptual planning)
- Claremont, CA - Rt. 66, corridor transportation study and walkability master plan
- West Hollywood, CA - Rt. 66, corridor transportation master plan and walkability study
- Orlando, FL - Downtown Traffic Management Master Plan
- Port Townsend, WA - Upper Sims corridor Study and gateway roundabouts; Public Facilitation
- Encinitas, CA - Highway 101 Corridor Study, Public Facilitation and Design, and peer review services
- Native Village of Eyak, AK - Transportation Plan
- San Juan Bautista, CA - Active Transportation Plan
- Summit County, CO - 5 Cities
- 14 Indian Nations (California, Washington, Montana, Michigan)

MAIN STREET PROGRAMS, CORRIDOR PLANS & ECONOMIC DEVELOPMENT INITIATIVES

- Roosevelt, L.I, NY - Charrette on main street design, walkability, livability
- Balboa Avenue, San Diego, CA - Corridor and village development
- University Place, WA - Bridgeport Way corridor and downtown reinvestment plans
- Sammamish, WA - Corridor plan
- West Ossipee, NH - Rural village development
- Cutler-Orosi, CA - Corridor investment and redevelopment
- Division Avenue, Grand Rapids, MI - Corridor redevelopment
- Coram, Middle Island, Long Island, NY - Village redevelopment
- Gerard Street, Huntington, Long Island, NY - Street, and plaza development
- Oregon Main Street Guide, Oregon Department of Transportation
- 16 on-site walkability and livability workshops for AARP

TRAILS & OPEN SPACE

- Grand Canyon North and South Rim and Grand Canyon Village Trails Plans
- Ludlum Trails – Trails Best Practices, Miami, FL
- East Coast Greenway - CT Gap
- Florida portion of the East Coast Greenway Trail
- St Mark's Trail
- Built Environment & Trails Summit, Kansas Department of Health & Environment
- Wyoming Trails Summit

SAFE-ROUTES-TO-SCHOOL PROGRAMS

- Cities of Missoula & Bozeman, MT - Statewide program
- Summit County, CO - 3 schools
- City and County of Honolulu, HI - 22 school studies
- City of Detroit, MI - 6 schools
- City of East Lansing, MI
- City of Hartford, CT - All elementary, middle and high schools in city
- City of Stamford, CT - All elementary, middle and high schools in city

ADDITIONAL EXPERTISE

SAFE ROUTES TO SCHOOL PROJECTS & MASTER PLANS

- City of San Francisco, CA - 2 school sites
- City of Lindsey, CA (with LGC)
- City of Los Angeles, CA - Los Angeles School District, with LGC)
- City of Casper, WY - 9 school sites, design guide and school siting study
- City of Sacramento, CA - Natomas School District, with LGC
- City of La Mesa, CA (with LGC) - 4 school sites
- Savannah, GA - 2 school sites
- Florida School Crossing Guard Program (initiated program (circa 1990), ongoing project
- Florida Traffic Safety Education Program (initiated program (circa 1990), ongoing project

PUBLICATIONS

- Author, Street Design Guidelines for Healthy Streets
- Author, Citizens Guide to Traffic Calming
- Author, Guide to Traffic Calming/Emergency Response
- Author, 22 Benefits of Urban Street Trees
- Author, 12 Steps Toward Walkable Communities
- Contributor, Walkability Workbook, U.S. EPA
- Contributor, Sustainable Nation, Urban Design Patterns for the Future (Section on street patterns, walkability).
- Contributor, AASHTO Traffic Safety Toolbox (bicycling section)

COMMUNITY SERVICE

- American Youth Hostels, Inc. (IYHF) President and Active Board Member (1980-92)

MEMBERSHIPS, ASSOCIATIONS & AFFILIATIONS

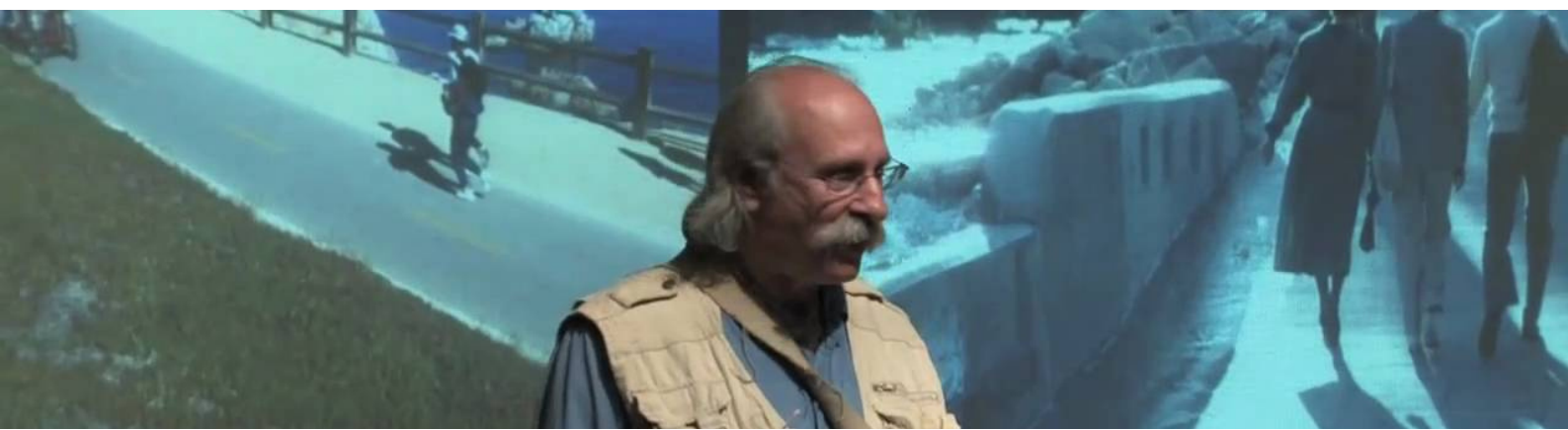
- Institute of Transportation Engineers
- Complete Streets Coalition
- Congress for the New Urbanism
- Smart Growth America
- Rails-to-Trails
- Active Living National Advisory Board
- Association of Pedestrian and Bicycle Professionals
- Transportation Research Board (3 committees)
- Walk Score, Board of Advisors

AWARDS & HONORS

- In 2014 the White House Honored Dan as a Champion of Change in Transportation and, in 2018, Dan was named one of the “100 Most Influential Urbanists” of all time by Planetizen. Awarded two of the first-ever lifetime Achievement Awards: (1) APBP and (2) New Partners for Smart Growth. The League of American Bicyclists named Dan “one of the 25 most significant leaders in bicycling for the past 100 years.” Dan was the Transportation Research Board’s Distinguished Lecturer in 2001. Time Magazine listed Dan as one of the six most important civic innovators in the world.

KEYNOTE & FEATURED ADDRESSES

- International Conference Keynotes: London, Dublin, Poland, China, Abu Dhabi, Australia, New Zealand, British Columbia, Ontario, Alberta, Ottawa, Others
- National Conference Keynotes: APWA, ICMA, AARP, ASLA, APA, ITE, AMPO National Mayor’s Institute, California, Washington, Hawaii, Florida, Kansas, Iowa, West Virginia, Wyoming, Nevada, Utah, Montana, Others



BUILT ENVIRONMENT SERVICES



BUILT ENVIRONMENT AUDITS

On-site and virtual walking, cycling and windshield audits that assess the built environment and encourage participants to share insights and experiences, aimed at addressing problems and finding solutions.



STAKEHOLDER ENGAGEMENT

Interviews and focus groups with key stakeholders (e.g., elected officials, municipal staff, advocates, residents, business owners) to gather input and encourage ownership on policies, practices and projects.



COMMUNITY WORKSHOPS & DESIGN CHARRETTES

Community visioning and planning, with a focus on pedestrian and bicycle safety, transit integration, street and trail design, traffic calming, downtown redevelopment, waterfronts, corridor revitalization, Safe Routes for All, and strategies for new development and infill.



TECHNICAL WORKSHOPS FOR STAFF & PRACTITIONERS

Focusing on addressing challenges, increasing capacity, and effectively implementing plans, while integrating and adhering to community input and leadership.



EDUCATIONAL PRESENTATIONS & SPEAKING ENGAGEMENTS

Inspirational, informative, and interactive sessions tailored to specific and collective audiences (e.g., electeds, businesses, health leaders, professional staff, university classes, the public) to present built environment impacts on health and well-being and speak to policy, systems, and environmental change best practices.



VISUALIZATIONS

High-quality renderings and graphics to help community members and investors envision, and ultimately implement concepts.



PEER REVIEW

Review of concepts, plans, and studies, providing technical expertise, quality assurance and illustrations of good practice.